

FurnitureGoddess ... All About Commercial Interiors & Furniture & Other Stuff

Q+E Design Source / Q+E Furniture Solutions is a full service Commercial Interior and Furniture Dealership with locations in California, Colorado and Arizona. Visit our website at www.qedesignsource.com

15 JUNE 2009

Introducing CAMPION PLATT COLLECTION FOR HBF Textiles



Inspired by natural forms, Campion Platt creates a new eco collection for HBF Textiles. Campion re-interpreted the traditional ideas of weaving, quilting, and stitching and set them against our visual perceptions of landscape forms and the macro environment. The six diverse woodland inspired patterns portray these abstractions from everyday nature, which can be seen as both familiar yet fresh.

FOREST LIGHT is a tightly woven linen and hi-sheen polyester textural pattern that has a soft hand and glistening sheen like that of a fresh forest rain. Forest Light provides a range of colors that extends throughout Campion's collection with 11 crisp hues that define his signature color palette for HBF Textiles.

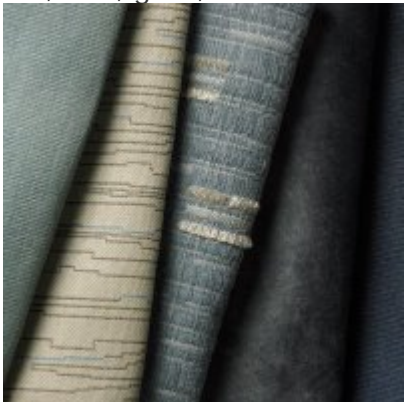
MOUNTAIN TARTAN incorporates organic cotton and bamboo rayon in six velvety colors. With Mountain Tartan, Platt worked from a historic tartan grid and updated the design to create a clipped quilt of random intersecting lines.

ROCK LEDGE AND WOODLAND TRACE both are comprised of post-consumer recycled polyester that re-interprets the wondrous craggy mountain terrains and the forest floor of fallen leaves and nettles. In Rock Ledge, the accent stitching plays an active role in moving your eye across this wonderfully sketched translation. Woodland Trace also

portrays a sketched quality with a subtle crepe design in the background.


ROUGH TERRAIN is derived from an asymmetrical check that portrays linear fields when viewed from a higher vantage point. Available in six sumptuous bamboo chenille combinations that are deceptively tough with 99,000 double rubs.

VELVET GROUND is one of the signature pieces from the collection. It was important to Champion to include velvet that looked and felt natural, not machined. This crushed bamboo velvet portrays the beauty of a moss covered landscape with all its natural imperfections. Available in eight exquisite shades of snow, sandstone, clematis, moss, fox, flint, glow, and dusk.



Campion Platt is a leading architect and interior designer whose projects range from notable residences and boutique hotels to one of a kind furniture and textile collections. His designs embody luxury, innovation and eco-friendly consciousness. A member of the American Institute of Architects and the Architectural League of New York, Platt has received numerous accolades for his holistic approach to design. His work is widely published and he is known as a creative, forward thinker in today's world of architecture and design. Working closely with the front-runners in sustainable manufacturing and material use, Campion has forged an inspired collaboration with HBF Textiles based upon these themes that remind us of nature.

For more information contact Q+E Design Source Inc 303.355.2700 ext 1# or kama@qedesignsource.com

Posted by Q+E Design Source & Q+E Furniture Solutions at [5:10 PM](#) 

Labels: [Campion Platt](#), [HBF Textiles](#), [neocon 2009](#), [Textile](#), [upholstery](#)